

DRC

PZ22-12000027

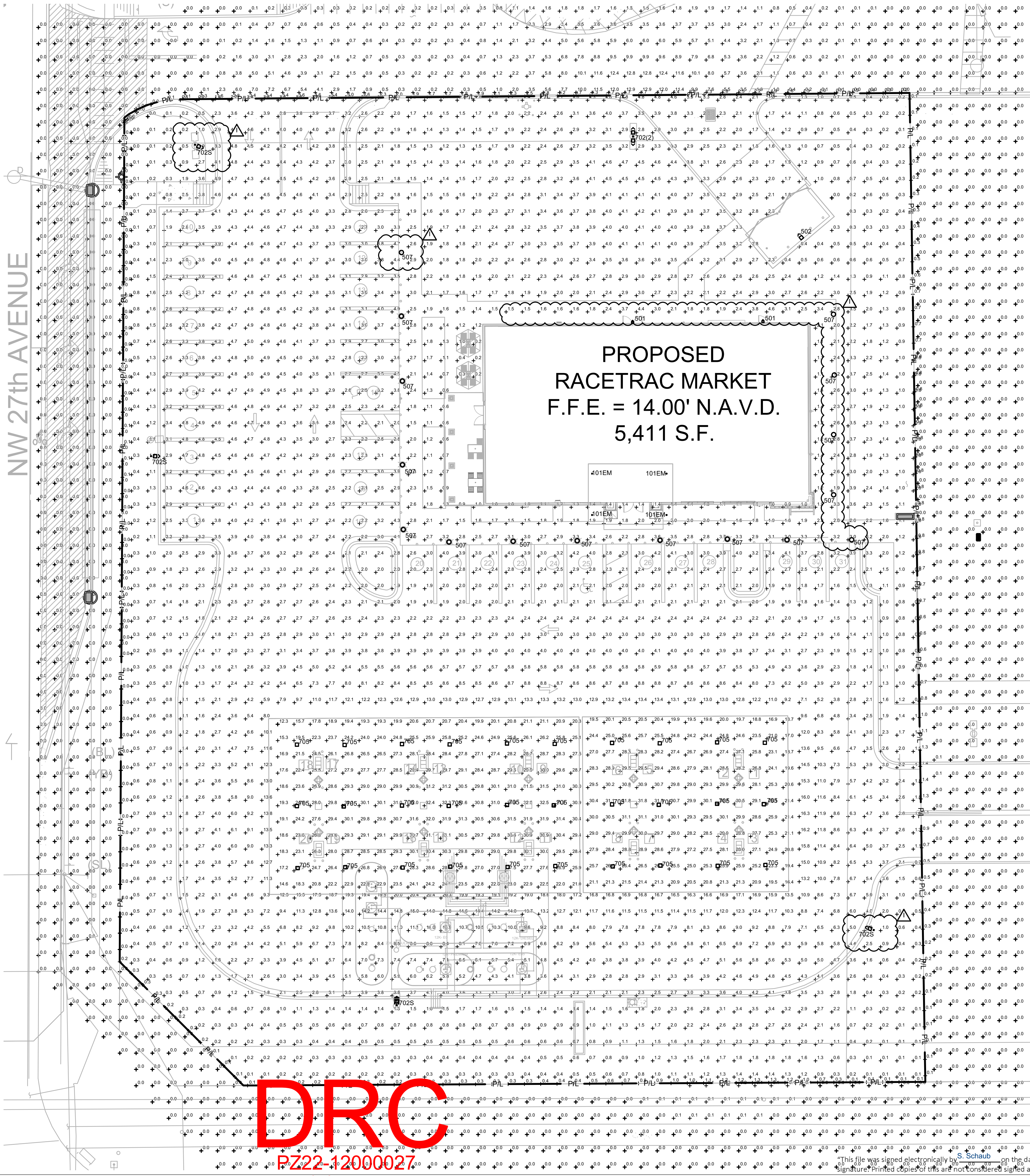
07/02/2025

LUMINAIRE SCHEDULE									
Symbol	Label	Qty	Catalog Number	Description	Lamp	File	Lumens	LLF	Watts
	705	30	SCV-LED-13L-SC-UNIV-DIM-50-WHT	SCOTTSDALE VERTEX PETROLEUM CANOPY LED LUMINAIRE	LEDs.	SCV-LED-13L-SC-50.IES	Absolute	1.00	84.3
	101EM	4	A2/B1-05	WITH BLACK TRIM AND RECESSED WHITE PLASTIC LENS	LEDs. LUMEN RATING = 648 LMS.	LR6.IES	647	1.00	11.5
	507	16	SP2-STR-Y4-2050-FCO-MOD/KR6-12LED-DB	SPECTRA SMALL SCALE POST TOP LUMINAIRE FROSTED GLASS DIFFUSER.	12 LED ARRAY	SP2-STR-Y4-2050-FCO-MOD (K66 LED)-DB.IES	1517	1.00	20
	702S(2)	1	MRM-LED-30L-SIL-FT-UNIV-DIM-50-70CRI	MIRANDA - MRM OUTDOOR LED AREA LIGHT	LEDs.	MRM-LED-30L-SIL-FT-UNIV-DIM-50-70CRI	Absolute	1.00	247(2)
	702S	4	MRM-LED-30L-SIL-FT-UNIV-DIM-50-70CRI	MIRANDA - MRM OUTDOOR LED AREA LIGHT (SHIELDED)	LEDs.	MRM-LED-30L-SIL-FT-UNIV-DIM-50-70CRI	Absolute	1.00	247
	501	2	700WSPTIC-S-LED827	TECH LIGHTING - PITCH SINGLE WALL SCONCE	LEDs.	700WSPTIC-LED830.IES	Absolute	1.00	26.2
	502	1	XWM-FT-LED-04L-50-UE-BRZ	MIRANDA WALL SCONCE (XWM)	LEDs.	LSI XWM-FT-LED-04-50.IES	Absolute	1.00	40

STATISTICS						
Description	Symbol	Avg	Max	Min	Max/Min	Avg/Min
Beyond Property Line	+	0.4 fc	9.9 fc	0.0 fc	N / A	N / A
Canopy 1	+	26.6 fc	32.5 fc	12.3 fc	2.6:1	2.2:1
Canopy 2	+	26.0 fc	31.8 fc	13.7 fc	2.3:1	1.9:1
Site	+	3.4 fc	20.4 fc	0.0 fc	N/A	N/A
Vehicle	X	4.9 fc	18.7 fc	0.2 fc	93.5:1	24.5:1
Property Line	+	0.8 fc	4.7 fc	0.0 fc	N/A	N/A

#### GENERAL NOTES

- ALL FIXTURES UTILIZED IN THIS SITE PHOTOMETRIC PLAN ARE FULL CUTOFF.
- MOUNT AREA LUMINAIRE TYPE '702S' AT 28'-0" AFG (INCLUDING POLE BASE)
- FILE NUMBERS PROVIDED FOR PHOTOMETRY REFERENCE ONLY. CATALOG NUMBERS SHALL BE UTILIZED FOR ORDERING FIXTURES.
- COLOR TEMPERATURE OF FIXTURES SHALL BE PROVIDED AS FOLLOWS
  - AREA LIGHTING - 5700K
  - BUILDING MOUNTED - 5700K
  - DECORATIVE POLE - 5000K
  - CANOPY - 5700K
  - CANOPY DOWNLIGHTS - 4000K



DRC

PZ22-12000027

10/01/2025

1 SITE PHOTOMETRY PLAN	
SP-1	SCALE:1/16"=1'-0"

DRC

PZ22-12000027

10/5/2022

Steven Schaub  
Digitally signed by Steven Schaub  
Date: 2021.04.30 15:40:31 -04'00'

**Racetrac**  
COPYRIGHT NOTICE  
THESE PLANS ARE SUBJECT TO FEDERAL COPYRIGHT LAWS: ANY USE OF SAME WITHOUT THE EXPRESSED WRITTEN PERMISSION OF RACETRAC PETROLEUM, INC. IS PROHIBITED. 2016 RACETRAC PETROLEUM INC.

#### DESIGN PROFESSIONALS

**GPD GROUP, INC.**  
LIC. # - 30920  
520 S. MAIN STREET, STE 2531  
AKRON, OH 44311

STEVEN P. SCHAUB  
LICENSE No. 75207

#### ISSUE/REVISION RECORD

DATE	DESCRIPTION
03/05/21	PERMIT SET
04/30/21	AHJ COMMENTS

**Racetrac**

RACETRAC PETROLEUM, INC.  
200 GALLERIA PARKWAY SOUTHEAST  
SUITE 900  
ATLANTA, GEORGIA 30339  
(770) 431-7600

#### PROJECT NAME

**SAMPLE & 27TH**

**POMPANO BEACH**  
**FL 33069**  
**2900 W. SAMPEL ROAD**

#### RACETRAC STORE NUMBER

**#1360**

#### PROTOTYPE SERIES 5.5K 2.0

**2020 LH MO 0305**

#### PLAN MODIFICATION NOTICE

SPB NO. 0305 DATE 11/30/20

STANDARD PLAN BULLETINS (SPB) MODIFY THE PROTOTYPE SERIES SET NOTED ABOVE. THE LISTED SPB REPRESENTS THE LATEST MODIFICATION INCORPORATED TO THIS PROTOTYPE SERIES SET AT ORIGINAL RELEASE. THE ISSUE/REVISION RECORD COLUMN ABOVE LISTS ANY REVISIONS OR SPB INCORPORATED IN THIS SET AFTER THE ORIGINAL RELEASE. CONTACT RACETRAC ENGINEERING AND CONSTRUCTION FOR ANY SUBSEQUENT BULLETINS NOT INCORPORATED HEREIN.

#### PROFESSIONAL SEAL

STEVEN P. SCHAUB  
LICENSE  
No 75207  
STATE OF  
FLORIDA  
PROFESSIONAL ENGINEER  
Signature:

PROJECT NUMBER 2019157.21 04/30/21

#### SHEET TITLE

**SITE PHOTOMETRY PLAN**

#### SHEET NUMBER

**SP-1**

DRC

8/17/2022

This file was signed electronically by S. Schaub on the date and/or time stamp 10/5/2022 10:05:27.  
Signature: printed copies of this are not considered signed and sealed and the signature must be verified on any electronic copy.